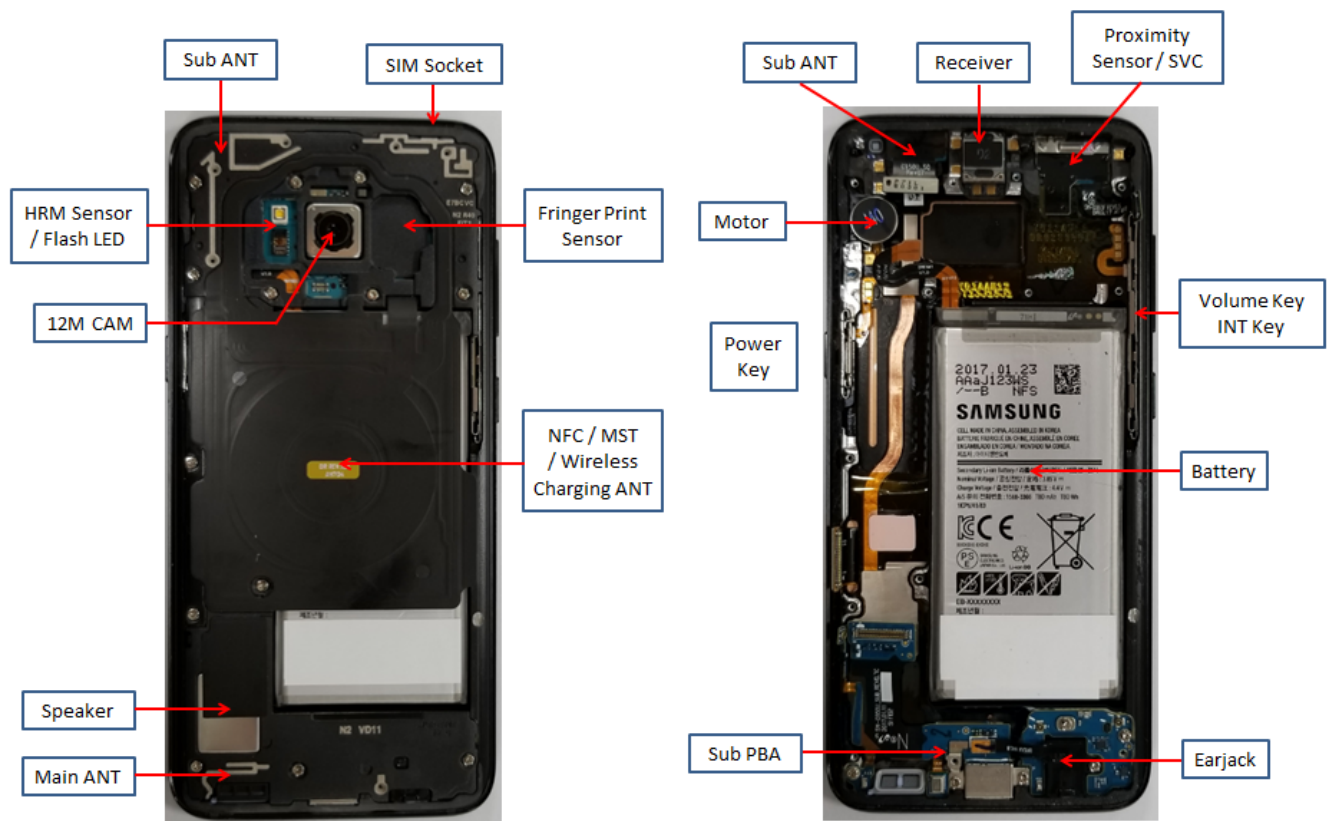


---

## 7. Level 2 Repair

---

### 7-1. Components on the Rear Case





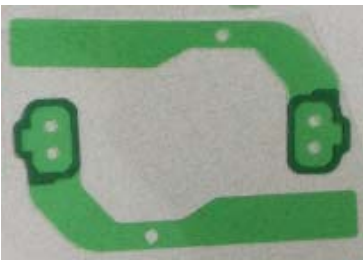
## 7. Level 2 Repair

### 7-2. Pre-requisite

	
<b>Tweezers / Disass'y Stick / Screw Driver</b>	<b>Anti-static Gloves</b>
	
<b>Anti-static Mat</b>	<b>Hot Plate</b>
	
<b>A OCTA Disassembly Holder</b>	<b>OCTA Disassembly Upper</b>
	
<b>Ethyl Alcohol</b>	<b>Cotton Swab</b>

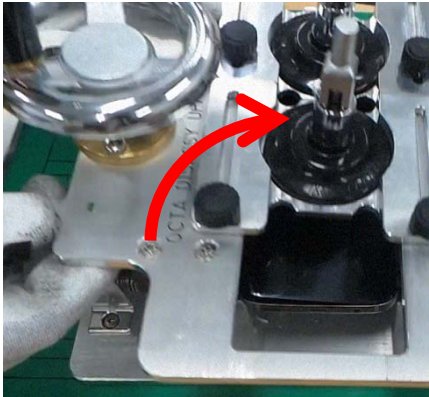



## 7. Level 2 Repair

### 7-3. Parts which must be changed after repair

BOM description & part code	Image	Remarks
<b>A/S-SVC TAPE BG WP OUTER (Common)</b>  <b>[GH81-14572A]</b>		<b>Replace for Back Glass repair</b>
<b>A/S-SVC TAPE BG INNER (EUR/NA)</b>  <b>[GH81-14573A]</b>		
<b>TAPE DOUBLE FACE-BG WP FINGER DECO</b>  <b>[GH02-14440A]</b>		<b>Replace for Back Glass Or Finger print sensor repair</b>

## 7. Level 2 Repair

### 7-4. Disassembly

<div data-bbox="97 302 183 369">1</div> <div data-bbox="191 302 794 555"><p>1) Put the device in the chamber as following below heating condition.</p><ul style="list-style-type: none"><li>- SOC 68%↓: 70℃/10~20min</li><li>- SOC 68%↑: 60℃/10~20min</li></ul><p>※ Please confirm the heating condition released lastly, and follow it.</p><p>2) Detach the Back Glass.</p></div> <div data-bbox="240 631 670 1025"></div>	<div data-bbox="801 302 887 369">2</div> <div data-bbox="895 302 1501 398"><p>Unscrew 15 Point and disassemble SIM Tray from device.</p></div> <div data-bbox="976 481 1318 1008"></div>
<p>※ Caution</p> <p>1) Be care of scratch.</p>	<p>※ Caution</p> <p>1) Be care of scratch.</p>
<div data-bbox="97 1171 183 1238">3</div> <div data-bbox="191 1171 794 1290"><p>Disassemble Upper Rear. (Use disassemble hole left side of Rear to detach it)</p></div> <div data-bbox="199 1411 671 1747"></div>	<div data-bbox="801 1171 887 1238">4</div> <div data-bbox="895 1171 1501 1290"><p>Finally Disassemble Rear of bottom side. (Use disassemble hole left side of Rear to detach it)</p></div> <div data-bbox="948 1415 1370 1809"></div>
<p>※ Caution</p> <p>1) Be care of Rear damage</p>	<p>※ Caution</p> <p>1) Be care of Rear and connector damage</p>

## 7. Level 2 Repair

5

Detach 2 3D PCB Receptacle cables, Battery connect and the other connectors. (8 Point connector)



※ Caution

1) Be care of connector/cable damage.

6

Detach Iris CAM and Front CAM.

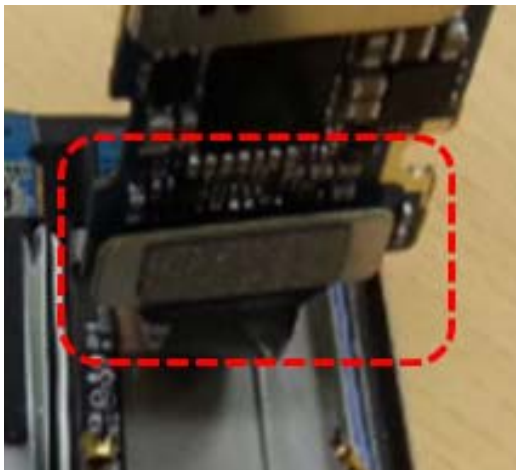


※ Caution

1) Be care of connector/cable damage.

7

Detach main PBA from Front.



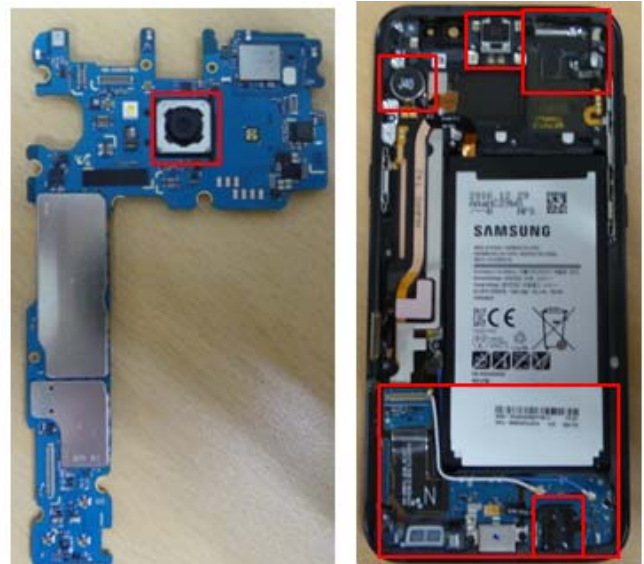
※ Caution

1) Be care of FPCB damage.

2) Be care of SUB PBA connector.

8

Detach other components.



※ Caution

1) Be care of several kinds of damage.



## 7. Level 2 Repair

### 7-5. Aassembly

1

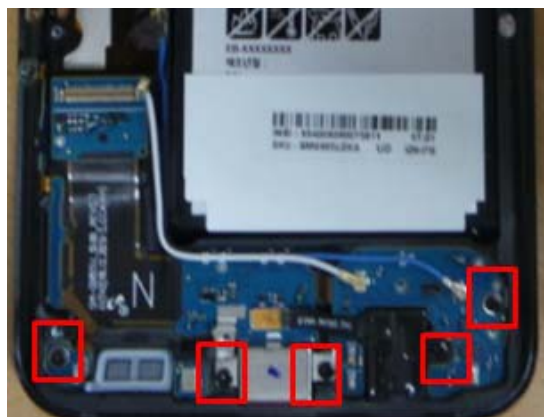
Attach SUB PBA and Ear jack on Front.



2

Screw 5 point in SUB PBA.

※ Torque 1.3Kgf·cm



※ Caution

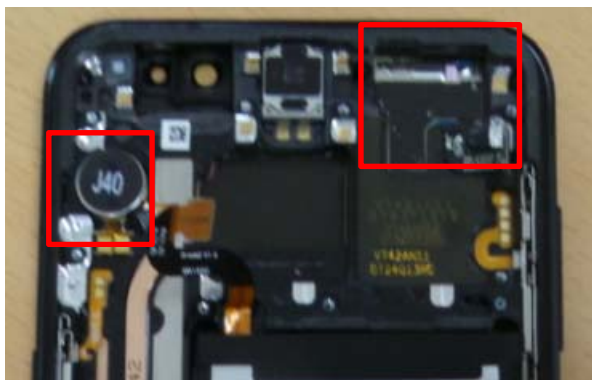
1) Be care of coaxial cable damage.

※ Caution

1) Be care of chip damage nearby screw point.

3

Attach components on Front.  
(Sensor FPCB, Motor)



※ Caution

1) Be care of FPCB damage and tilt.  
2) Be care of press power/time.  
3) Do not reuse battery.

4

Attach PBA assy In Front Assy.  
(PBA+ Front)



※ Caution

1) Be care of Push SUB PBA connector.  
2) Be care of components FPCB..

## 7. Level 2 Repair

5

Attach IRIS/SUB CAM on PBA.



6

Attach 2 3D PCB Receptacle cables, Battery connect and the other connectors. (8 Point)



※ Caution

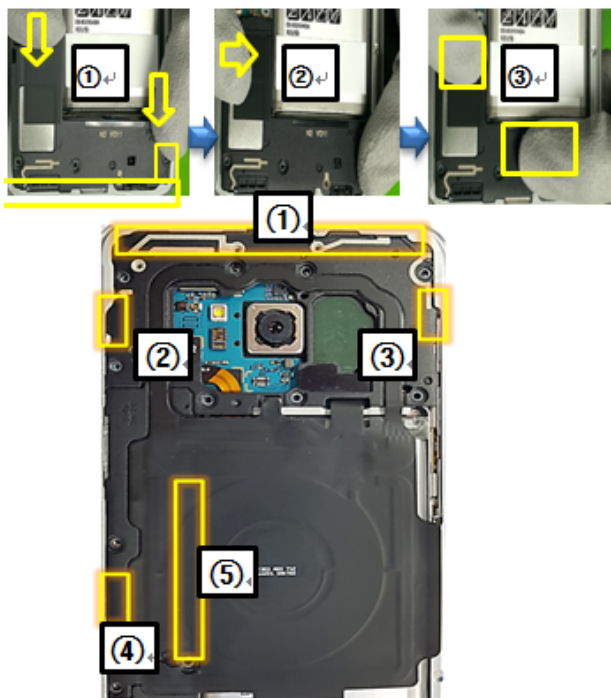
1) Be care of CAM Lens from finger print.

※ Caution

1) Be care of connector damage.  
2) The Battery connector is the last attach.

7

Assemble the REAR in sequence.  
Lower → Upper Rear.



8

Screw 15 Point and then insert SIM Tray on device. ※ Torque :1.3 Kgf·cm



※ Caution

1) Be care of scratch and REAR damage.

※ Caution

1) Be care of scratch and REAR damage.

## 7. Level 2 Repair

9

Attach Finger print sensor on PBA.



10

Attach finger print sensor tape on the back.  
Attach inner and outside tape on the rear case.  
And assemble the back glass



※ Caution

1) Be care of scratch and REAR damage.

※ Caution

1) Be care of scratch and tilt.

11

Press Back Glass.  
Pressing force: 1N / Pressing time: 1m



※ Caution

1) Be care of scratch.